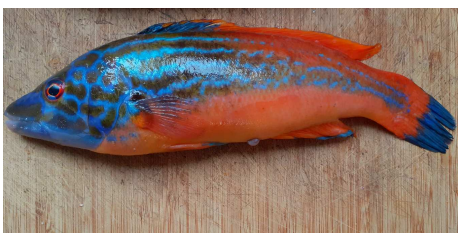


**O**ur activities, the journey of the goods that we transport to you are carried with a certain eye at the world. The organization of transport operations is done day, at night, in lights, in extremely diverse scents and atmospheres.

That's why, this month, **AILE & ILE ASSOCIES** is giving "Carte Blanche" to Dominique Martinelli to bring us his camera to see his snapshots, his "taken in action", his "taken on the spot".

Brittany, as a kind of advanced peninsula in the Atlantic Ocean, is one of its playgrounds, leeward landscapes, coastal birds, waves, high sea lights. Follow his work via [#martinelli\\_photographe](#) and our exhibition [by clicking here](#)



Aile & Ile Associés « Carte Blanche »